

Figure 2.D

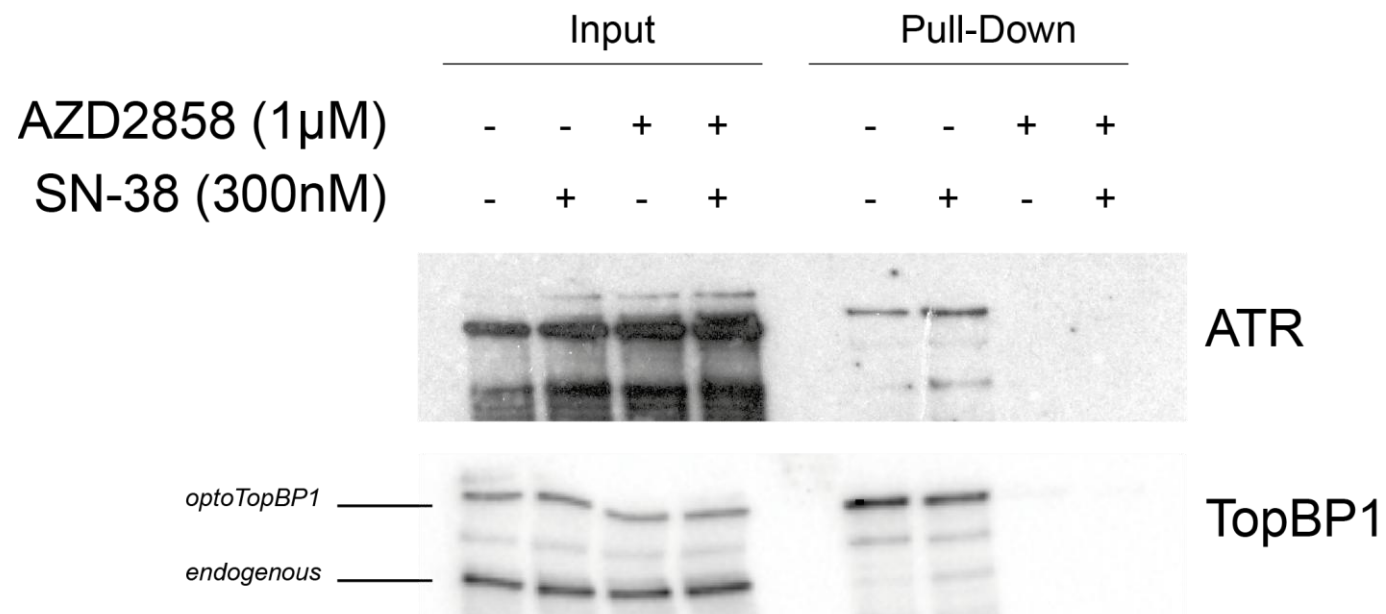
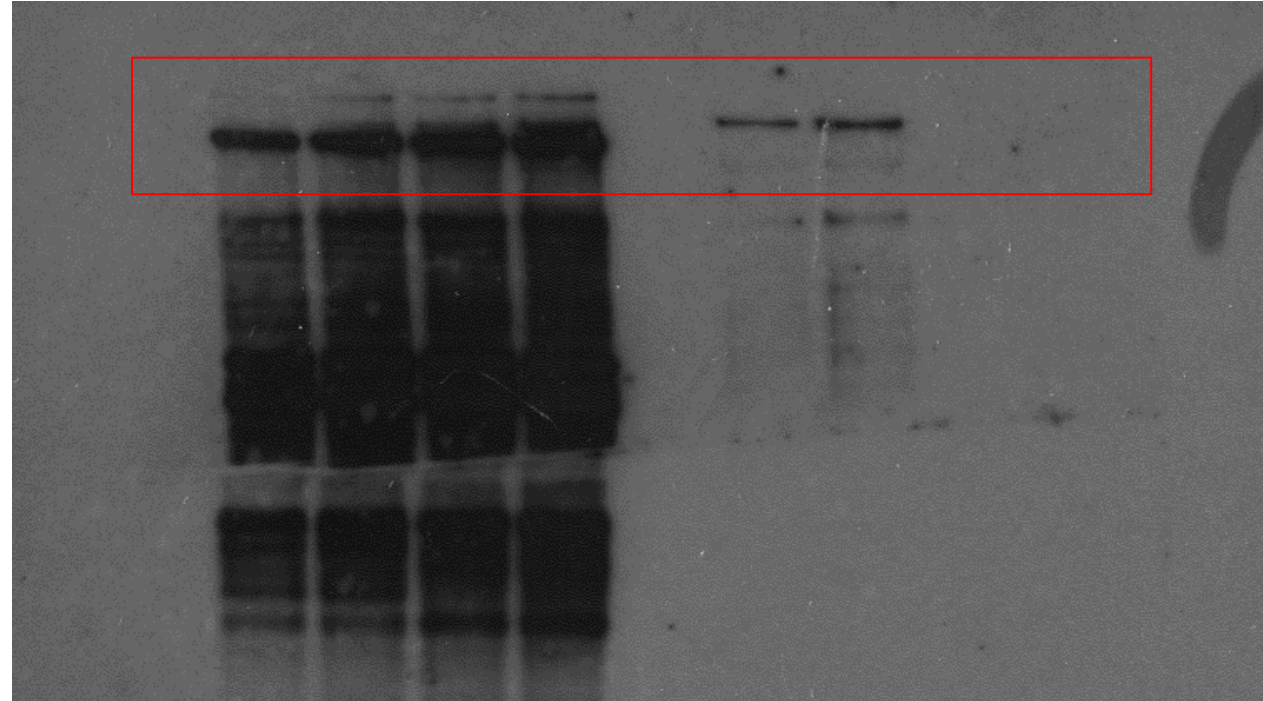


Figure 2D, Source Data 1. Below are the Original membranes corresponding to Figure 2D.

Immunoblotting of TopBP1 and ATR isolated with streptavidin beads from optoTopBP1-expressing cells incubated with doxycycline for 16 h to induce optoTopBP1 expression, and also with AZD2858 (1 μ M) and/or SN-38 (300 nM) for the last 2 h. Biotin was added to the medium in all conditions for the last 30 min. Bands that correspond to endogenous and optoTopBP1 proteins are indicated with one and two stars (* and **), respectively

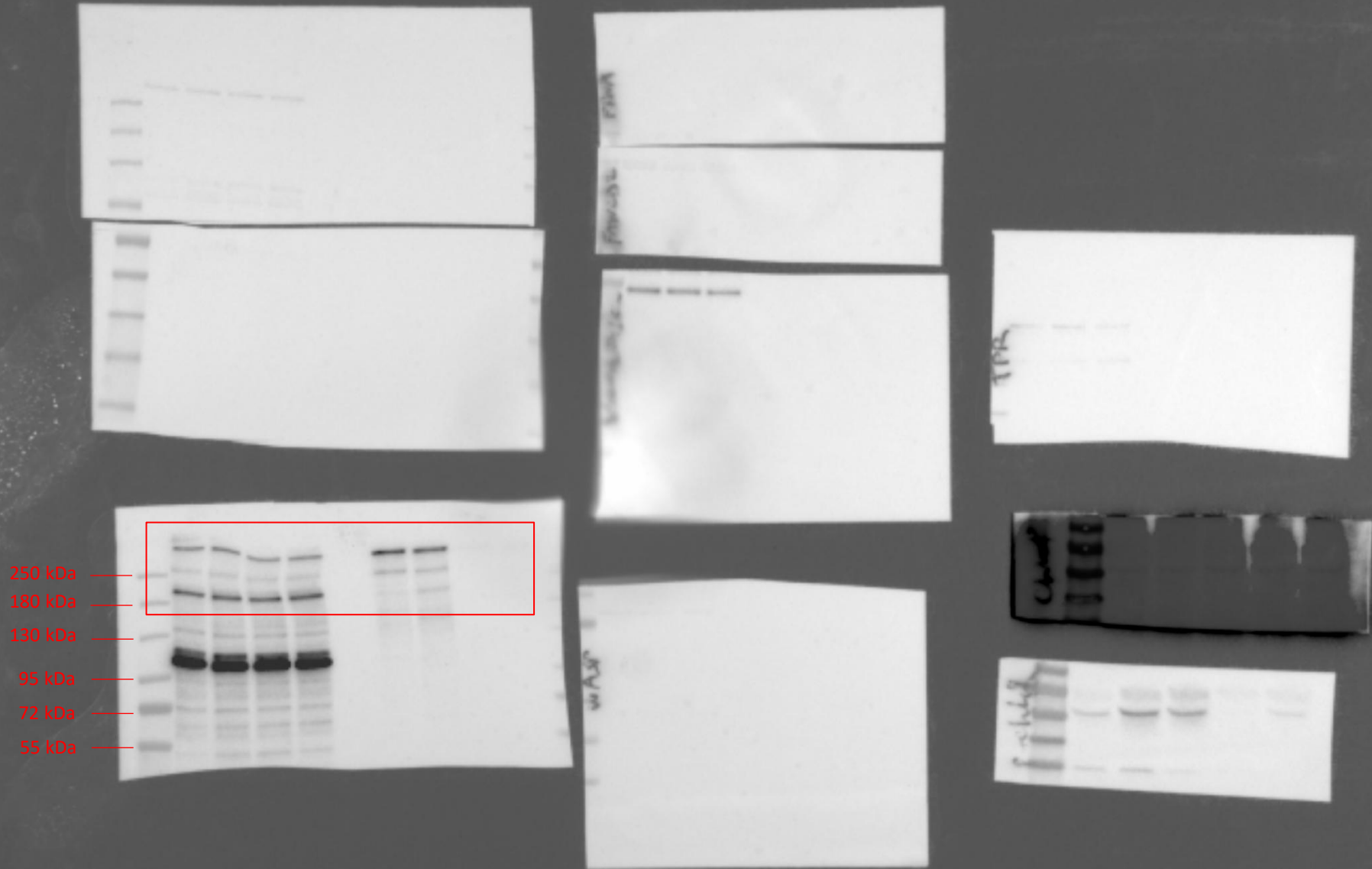
Chemiluminescence bands for ATR

ATR



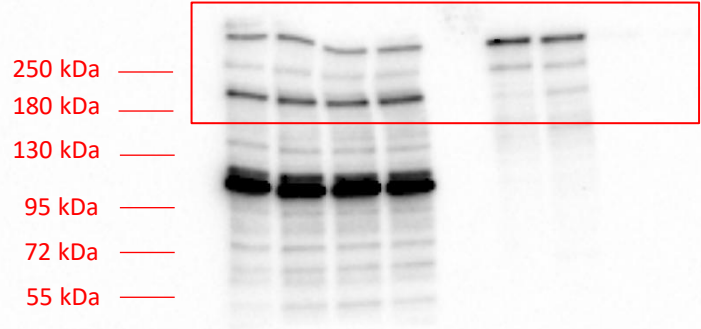
Colorimetric for TopBP1

TopBP1



Chemiluminescence bands for TopBP1

TopBP1



Colorimetric for ToPBP1

TopBP1

250 kDa —
180 kDa —
130 kDa —
95 kDa —
72 kDa —
55 kDa —

